



NEWINGTON LONDON

2 Bedrooms

Apartment

Located in London

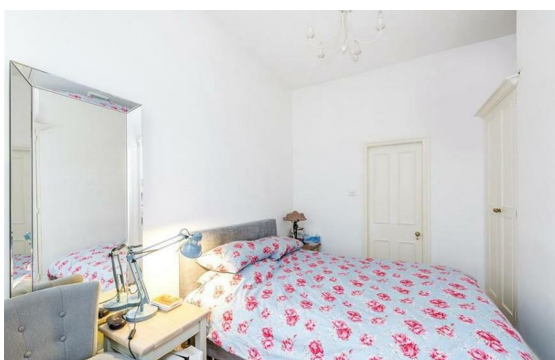
£1,020 Per Month



info@newingtonstates.com

<http://www.newingtonstates.com>

020 7724 2233



NEWINGTON LONDON

60 Upper Montagu Street

London

W1H 1SN

020 7724 2233

info@newingtonstates.com

A stunning 2 bedroom apartment situated on the ground floor/lower ground floor in the heart of the Marylebone. The property features a spacious and well equipped kitchen, bright reception area with built-in fireplace and designer furniture, separate dining room which leads onto a generous private terrace, large bathroom and plenty of storage. Ideally located in London, you will find a lot to love not only inside the apartment but outside as well.

Property is well serviced by numerous transport links including Baker Street Station, Marylebone Station and variety of the bus routes. Stunning and breathtaking Marylebone High Street is only 10 minutes walk away and has got a lot to offer: posh restaurants, cute coffee shops, high end boutiques, beautiful cinema and little souvenir shops.

EPC rating: C

Energy Efficiency Rating: C

Agents Note: Whilst every care has been taken to prepare these particulars, they are for guidance purposes only. All measurements are approximate and are for general guidance purposes only and whilst every care has been taken to ensure their accuracy, they should not be relied upon and potential buyers/tenants are advised to recheck the measurements.

<http://www.newingtonstates.com>